

# **US 12 Nine Mile Hill to Frenchtown Vicinity – Phase 7**

## **Project Update**

Alex Sanguino, PE

Port of Walla Walla Economic Development Meeting

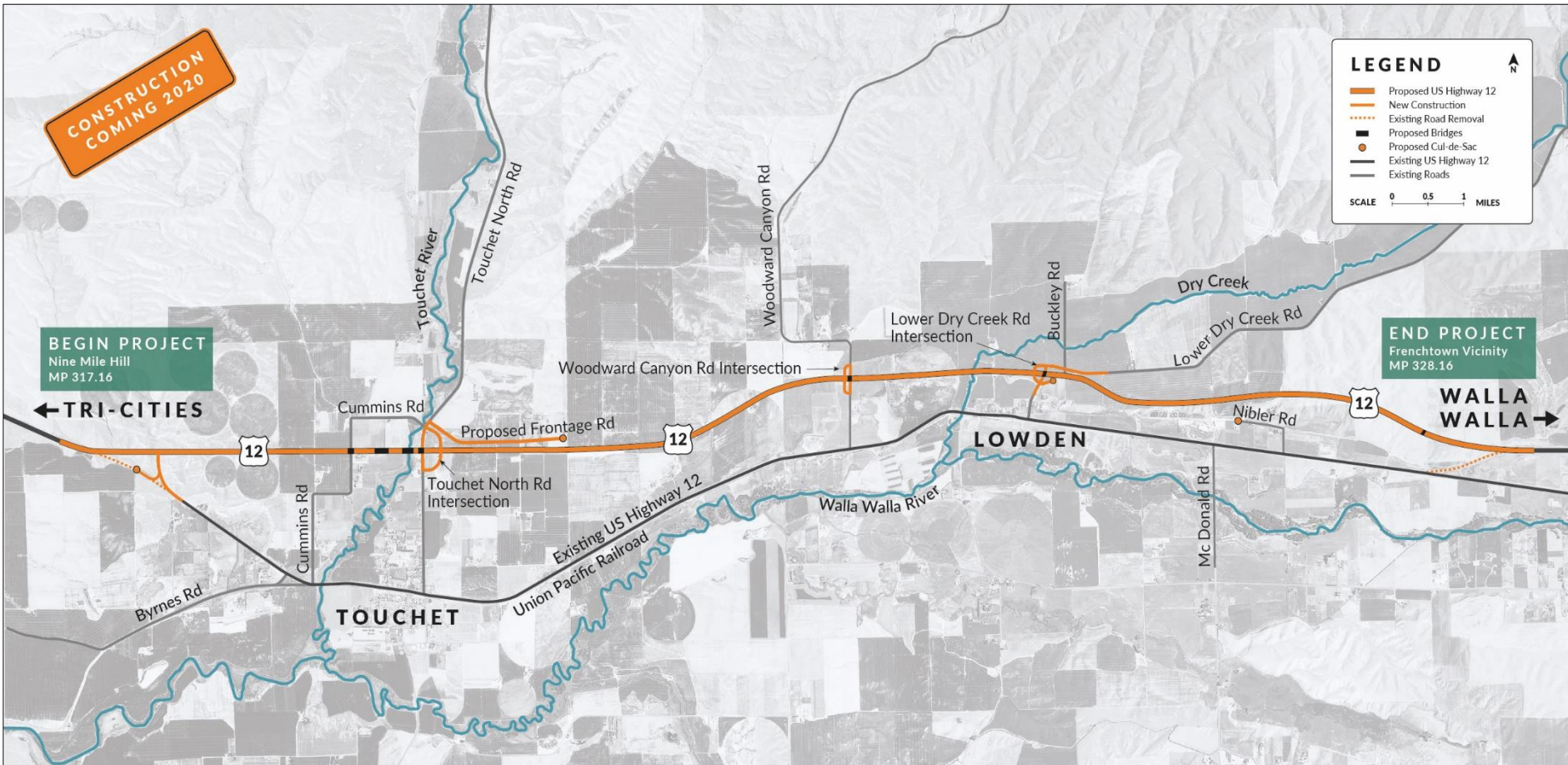
Sept. 22, 2020

# Safety is our priority

- Over the past 29 years the US 12 corridor has had **1,000** collisions, **500** injuries and **20** fatalities.
- This corridor carries between **7,000** and **13,000** vehicles a day, with up to **12** percent truck traffic.
- Our number one priority is to make this corridor safe for drivers and the local community.

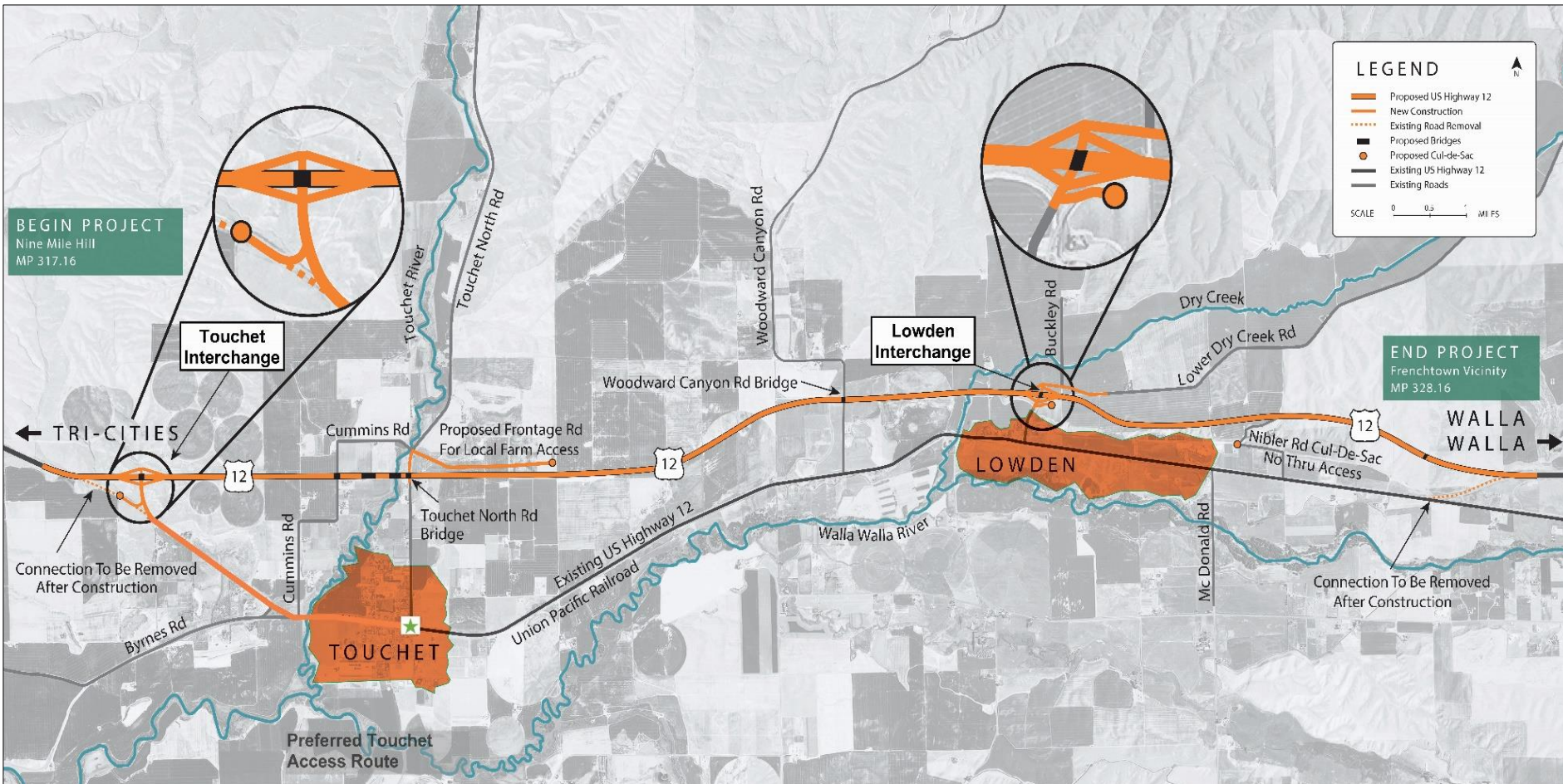


# Conceptual Design



WSDOT's Conceptual Design

# Current Design



*Atkinson's Current Design*

# Fully Grade Separated Interchanges

- Diamond Interchanges use ramps to merge traffic onto and off of the highway instead of right turns – The current design has eliminated all of the right turns off of and onto the highway
- Overpasses separate cross traffic from the highway
- Interchange location eliminates right turn on to Touchet Rd North at Chevron promoting safety – especially for trucks entering the freeway and prevents substantial increase in traffic in front of homes on Touchet Rd North

# Vibrant Small Business Corridor

- The current interchange locations are designed to create a Vibrant Small Business Corridor on old US 12 – signed accordingly with input from the community
- Promotes local or tourism business traffic to travel on the old US-12 – a far safer road for the volume of traffic than Touchet Rd North

# Project Timeline

## CONSTRUCTION SCHEDULE

2020 -2023: Phase 7 constuction underway

Summer 2023: New four-lane, divided highway  
scheduled to open

# Questions?

**Alex Sanguino, P.E.**

South Central Region

Washington State Department of Transportation

509-222-2403

**Mathew Rugh**

Atkinson Construction

425-766-6781

**Project Hotline**

509-588-7911