



COLLEGE PLACE PUBLIC SCHOOLS
Focusing on Kids and Their Learning

Charting the Path Forward for CPPS

Land Purchase Proposal



Life In the Pandemic 2020-2021

- CPPS has served special populations of students onsite since the first day of school:
 - Preschool
 - Special Education
 - English Language Learners
 - Students experiencing homelessness
- All other students were served in “Remote Learning” September and part of October
- CPPS spent three weeks in “AM/PM Hybrid” in October before the “Second Wave” pushed us back into Remote Learning.
- All students, all grades have been back onsite in “AM/PM Hybrid” for the past 6-10 weeks.
- Serving over 200 students in our “Full Time Remote Learning” option with an assigned teacher teaching live daily.
- Still not one positive case originating from our schools!



Still Growing Despite the Pandemic

- This year despite the pandemic, CPPS enrollment remained flat despite schools across the state seeing a loss of 10-25% of enrollment.
 - Two Factors:
 - Excellent, personalized online learning option
 - Continued growth in College Place
- Davis Elementary School averaged 25.51 new students (1 new class) each of the past 5 years
- Sager Middle School averaged 18.69 new students each of the past 5 years
- College Place High School averaged 44.63 new students each of the past 2 years (after rolling up to four full classes)
- Preschool (ECAEP/Developmental) doubled in size from 2019-20 to 2020-21 (with a waiting list)
- CPPS' average annual growth K-12 = 5.8% (Roughly 90 students yearly)



Building Capacity

- Davis Elementary Capacity internal Core: @ 750 students
 - Addition of 6 portable classrooms adds 150 student capacity*
- Sager Middle School has room to grow into two more rooms (possibly next year) then any new staff added will roam
- CPHS currently has two more teachers than classrooms (two teachers roam)



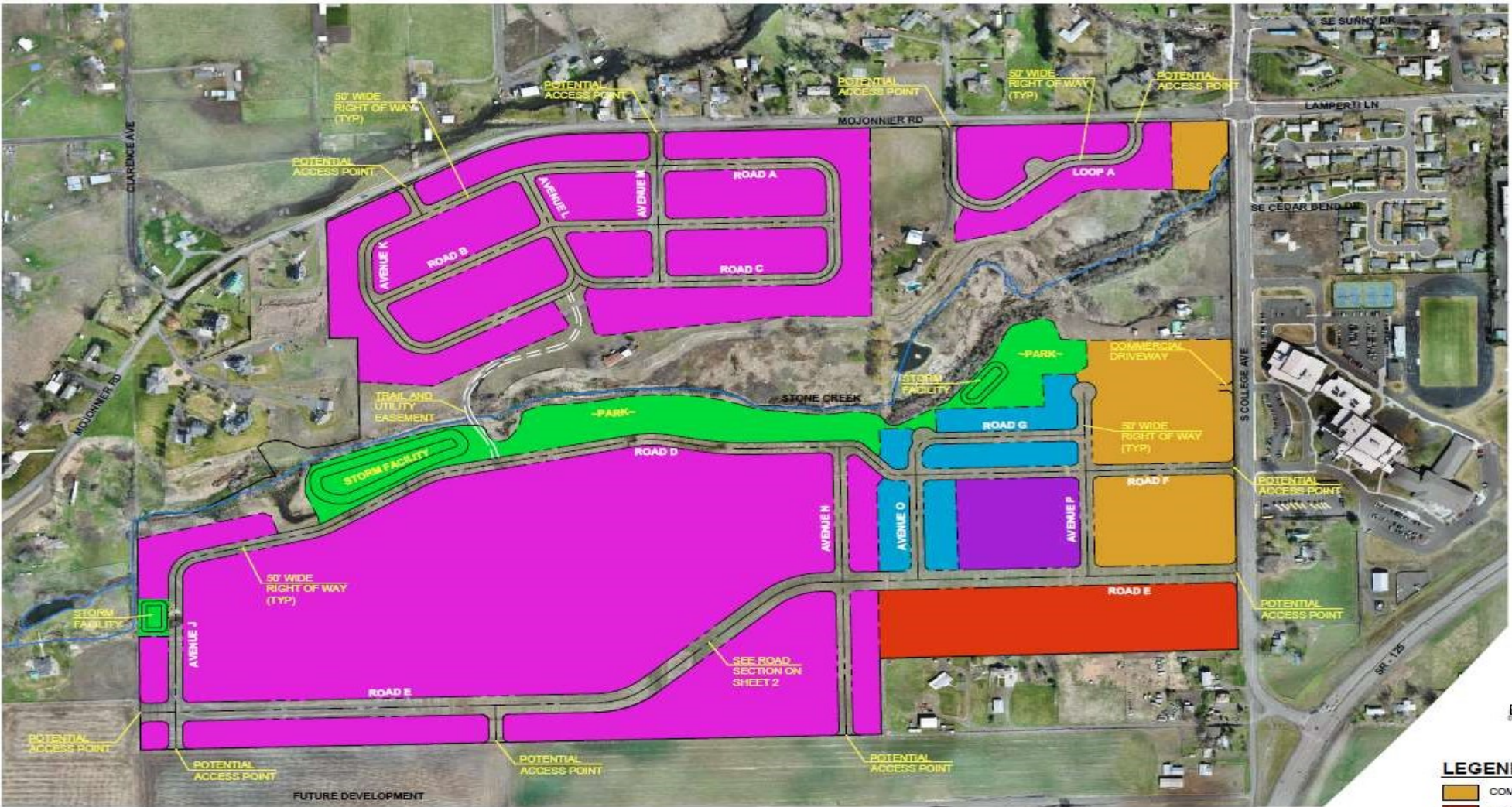
COLLEGE PLACE PUBLIC SCHOOLS





City Growth Plan

- Five Year Development Plan of the City of College Place includes significant development plans across from current CPHS/SMS/DO grounds projected for 300-400 homes
- Villages of Walla Walla--180 family units (Across Whitman from Home Depot)—Permits Paid
- Homestead Third Phase--25 homes at Homestead (Julia & Dones)—Permits Pulled
- Homestead Final Phase--25 homes at Homestead (Western WAVA)—Permits Pulled

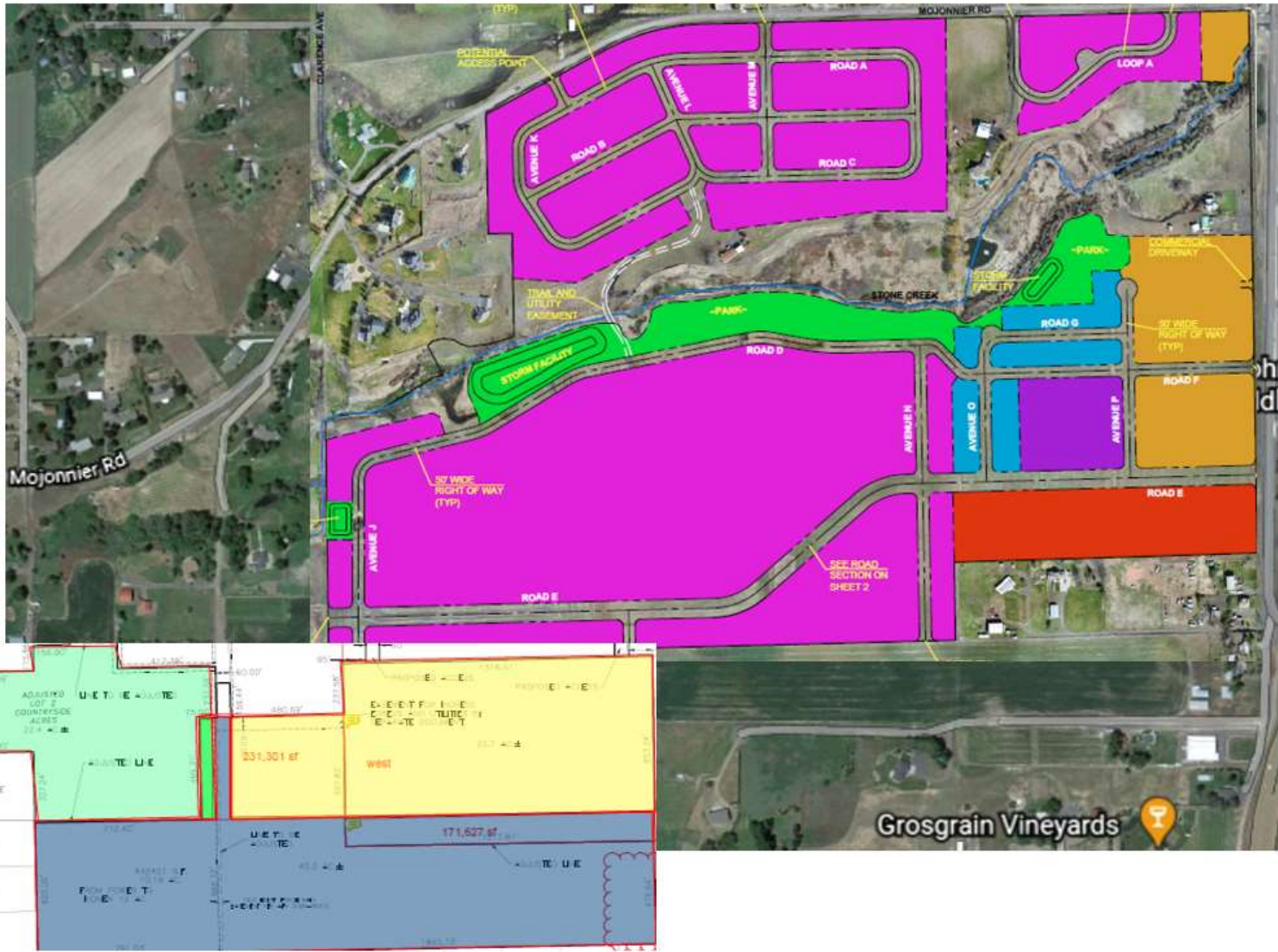


LEGEND

	COMMERCIAL
	HOTEL / SENIOR LIVING
	MULTIFAMILY / MIXED
	TOWNHOMES
	SINGLE FAMILY
	PARK/STORMWATER



COLLEGE PLACE PUBLIC SCHOOLS





COLLEGE PLACE PUBLIC SCHOOLS

Questions/Comments?