



# Economic Development Informational Meeting



March 26, 2024

# World leader with a local presence

We create sustainable solutions to protect life, assets, and the environment today and tomorrow

**120+**

Countries in which we have salespeople

**12K**

Global employees

**51**

Manufacturing facilities

**\$~4B**

Net Sales



- Manufacturing facilities
- Sales offices

# Stone wool market leader in North America

With 4 manufacturing facilities ROCKWOOL is North America's largest and leading producer of stone wool insulation

4

Stone wool manufacturing facilities

4

Brands

1500

Employees across all brands



Grand Forks, BC

Milton, ON

Ranson, WV

Marshall County, MS

Wallula Gap Business Park

Proposed Project

Manufacturing lines

Sales offices

# The **7** strengths of stone



## Fire-resilience

Withstand temperatures above 1000°C



## Circularity

Reusable and recyclable material



## Thermal properties

Save energy by maintaining optimum indoor temperature and climate



## Robustness

Increased performance and greater stability with lower costs



## Acoustic capabilities

Block, absorb or enhance sounds



## Aesthetics

Match performance with aesthetics



## Water properties

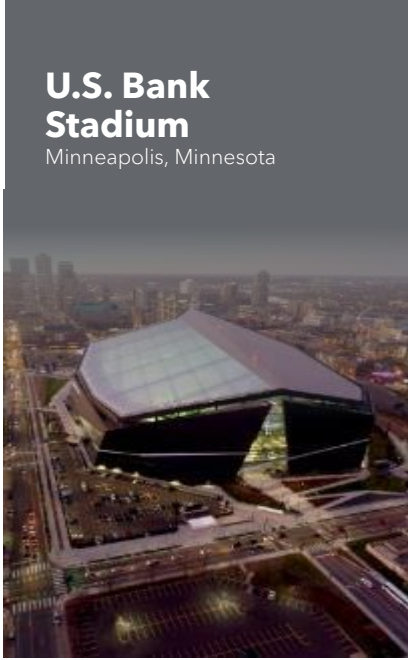
Engineered to repel or absorb water



# ROCKWOOL behind the walls of buildings across the USA

## U.S. Bank Stadium

Minneapolis, Minnesota



## Empire State Building

New York City, New York



## Mira Condominium

San Francisco, California



## Climate Pledge Arena

Seattle, Washington





# ROCKWOOL's approach to sustainability is closely aligned with the UN Sustainable Development Goals

## SUSTAINABLE DEVELOPMENT GOALS





# Enabling more carbon-efficient buildings and decarbonizing our facility footprint

Over its lifetime, the building insulation we sold in 2023 saves

**100x**

The energy consumed in its production

**ROCKWOOL Wallula, WA facility to include proprietary electric melting technology**

**SUSTAINABLE  
DEVELOPMENT  
GOALS**

**13** CLIMATE ACTION



# Bringing new employment and broad economic growth

Investment in WA  
during construction

**\$175M**

Jobs during  
construction

**670**

Direct payroll  
earnings

**\$8.6M**

When fully  
operational

Direct jobs

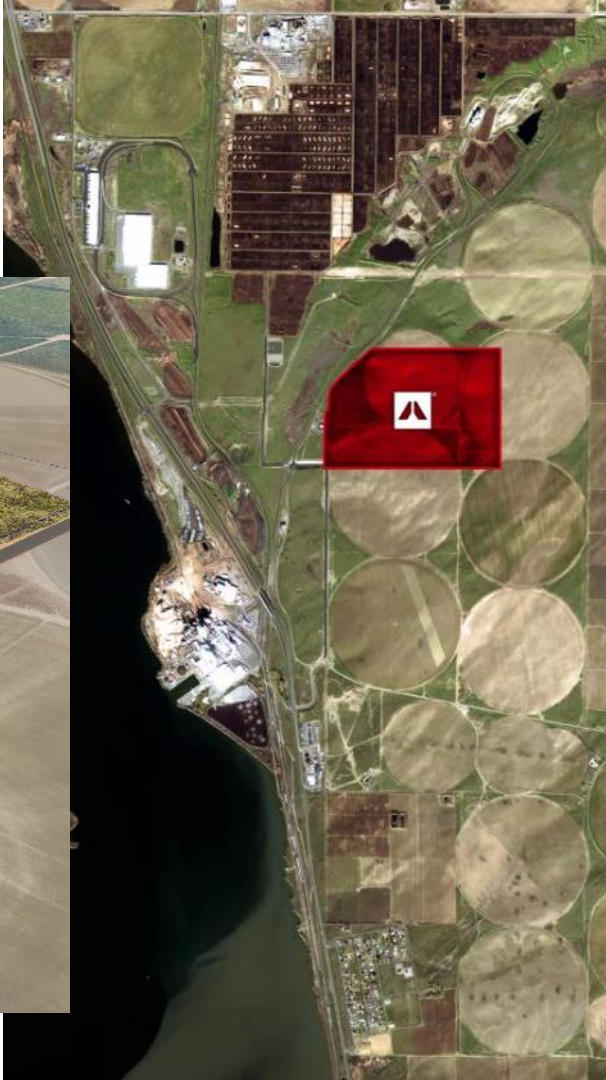
**125**

When fully  
operational

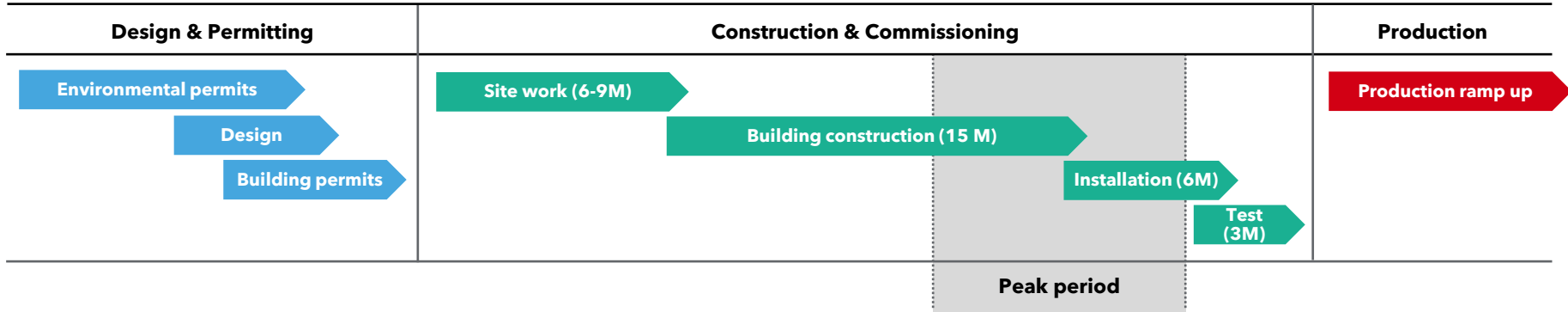
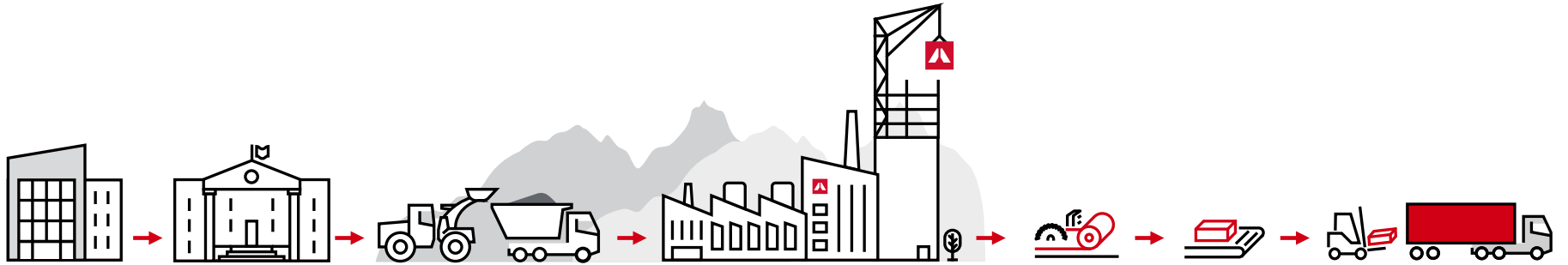




# Intended new facility in the Wallula Gap Business Park



# Project phases



# ROCKWOOL Stone Wool Insulation - Turning Rocks into Insulation



<https://youtu.be/5Cwx1yuFdKs>



# Upcoming community open houses

**Wednesday, April 17<sup>th</sup>**

5-8pm

Fire Hall Conference Room  
Burbank, WA

**Thursday, April 18<sup>th</sup>**

5-8pm

Airport Conference Room  
Walla Walla, WA

[www.rockwool.com/north-america/wallula](http://www.rockwool.com/north-america/wallula)

**Meet ROCKWOOL**  
Open House  
4/17 & 4/18



**ROCKWOOL** Learn More

**ROCKWOOL**

**Building a Better Future**  
Construyendo un futuro mejor



**ROCKWOOL**



# Questions?

 **ROCKWOOL**

[www.rockwool.com/north-america/wallula](http://www.rockwool.com/north-america/wallula)

# Appendix

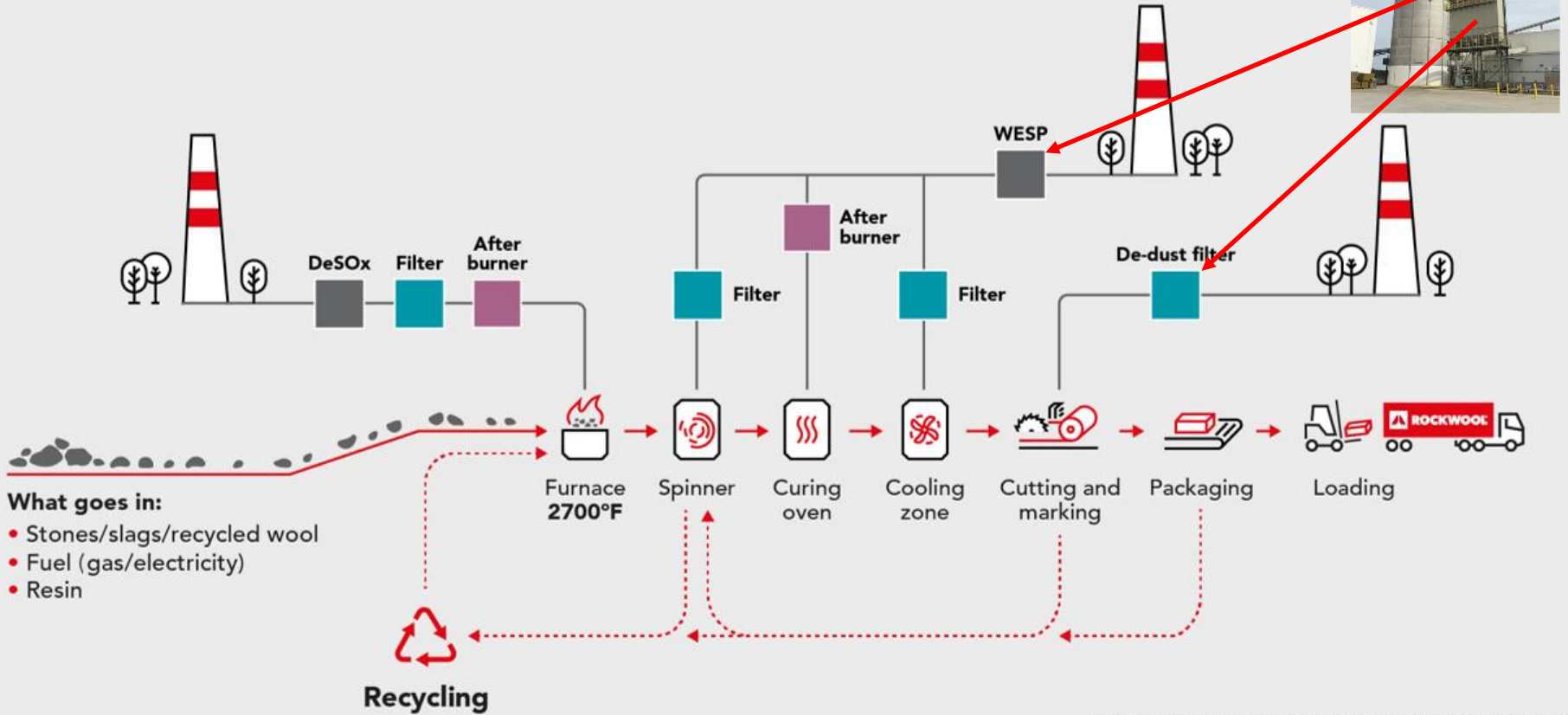


# Facility in Ranson, WV



**Legend:**

- Movement of raw materials and wool
- Exhaust from different parts of the production process
- ⋯→ Recycling of wool waste



\*The above graphic is an illustrative representation only.