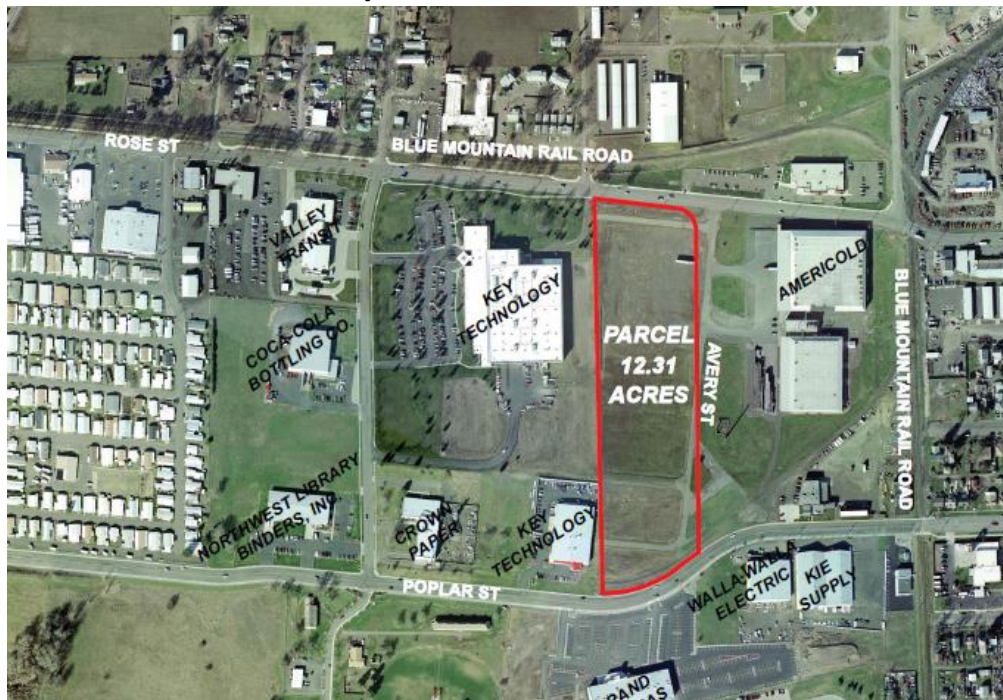


Avery Business Park – Phase 2 Walla Walla, Washington

The Avery Business Park – Phase 2 is a 12.3 acres zoned industrial light/commercial located in the City of Walla Walla. The Park is development ready and is approximately 1 mile from U.S. Highway 12 and 4 miles from the Walla Walla Regional Airport. The Park also has excellent access and is ideal for light manufacturing, service related and commercial type industries. The Park is also located between Key Technology’s Corporate Headquarters and AmeriCold Logistics. The Park’s lots can be configured to accommodate your specific business needs. The Port will sell and/or lease the lots.



<u>Acreage:</u>	12.3 Acres	
<u>Zoning:</u>	Industrial Light/Commercial	
<u>Utilities:</u>	Electrical:	Pacific Power or Columbia REA
	Water:	City of Walla Walla
	Sewer:	City of Walla Walla
	Gas:	Cascade Natural Gas
	Communications:	Century Link Communications
<u>Transportation:</u>	Highway:	U.S. Highway 12 – 1 mile
	Rail:	On-site
	Airport:	Walla Walla Regional Airport - 4 miles

Maps: <https://mapsengine.google.com/map/u/0/edit?mid=z2DUclARp77M.kluMYWfAksi8>

For more information, contact Pat Reay or Paul Gerola at the Port of Walla Walla at 509-525-3100 or by email at pr@portwallawalla.com or pg@portwallawalla.com.