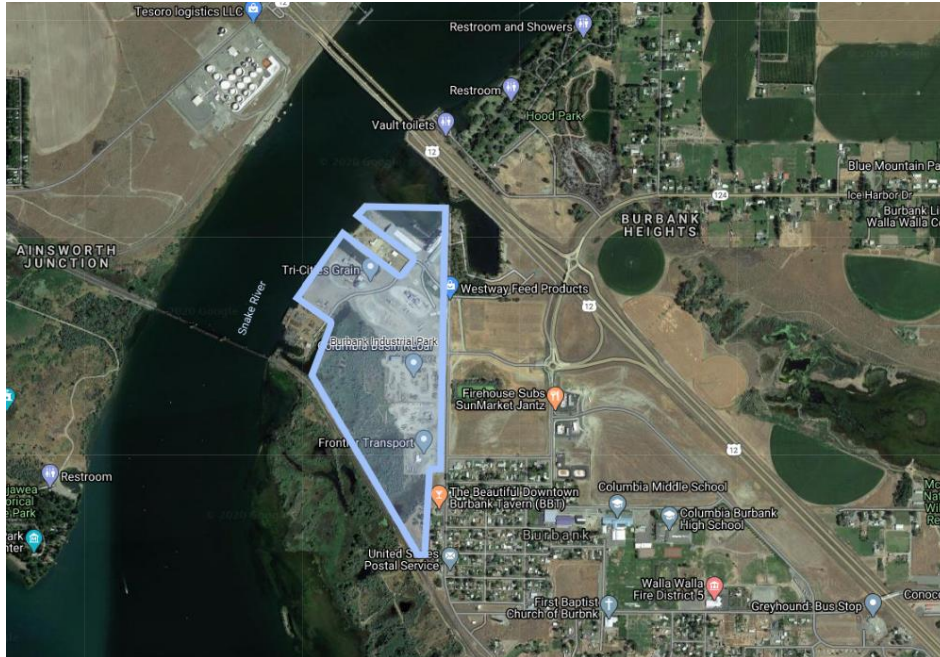


# Burbank Industrial Park Burbank, Washington

The Burbank Industrial Park is a 5.0 acre industrial park (Lots 2) located at the confluence of the Columbia and Snake Rivers and 6 miles from the Tri-Cities Metropolitan Service Area (Pasco, Kennewick, and Richland) with a total population over 290,000. The Park is ideally suited for businesses needing to import and export products via barge or rail. Transportation assets include a cargo dock, two barge slips and rail served by BNSF Railroad. The Park is adjacent to U.S. Highway 12 and minutes from Interstate 395 (North & South). The Park has excellent truck and rail access, potable and fire suppression water, electrical, and natural gas services. The Park lots are available for lease and can be configured to accommodate your specific business needs.



- Acreege:** 5.0 Acres (Lots 2)
- Zoning:** Industrial
- Cargo Dock :** Berthing Space: 60 x 250 Cargo Dock  
Height: 12 Feet; Apron: 2.7 Acre Storage Area; Water Depth: 14 Feet  
Use: General Cargo; River Miles: 320
- Barge Slips:** Berthing Space: 2 Barge Slips; Normal Pool Elevation: 15 Feet  
Normal Pool Elevation Depth: 16-20 Feet
- Utilities:**
  - Electrical: Pacific Power – On-Site
  - Water: Port of Walla Walla – On-Site
  - Fire: Port of Walla Walla – On-Site
  - Sewer: Engineered Septic
  - Gas: Cascade Natural Gas – On-Site
  - Telephone: Century Link Communications – On-Site
- Transportation:**
  - Highway: U.S Highway 12 – ½ mile
  - Rail: BNSF - On-site
  - Airport: Tri-City Regional Airport - 6 miles

For more information contact Pat Reay [pr@portwallawalla.com](mailto:pr@portwallawalla.com) or Paul Gerola [pg@portwallawalla.com](mailto:pg@portwallawalla.com) at the Port of Walla Walla at 509-525-3100.